

— 24th April 2026 —

# Tring Park

School for the Performing Arts

## DATES FOR YOUR DIARY

### Year 10 exams begin

20<sup>th</sup> April

### Open Day for Prospective Pupils

30<sup>th</sup> April

### Study 'Leave' begins for year 11 and 13 pupils

Monday 11<sup>th</sup> May

*Please note that pupils are expected to attend vocational lessons as timetabled.*

### Prep Department Open Day for Prospective Parents

15<sup>th</sup> May

## SUMMER TERM

### Exeat

2nd / 3rd/ 4th May

### Half Term

23rd May – 31st May

### Exeat

20th/21st June

### Founders' Day / End Term

Saturday 11th July

**All pupils are expected to attend. School closes following Founders' Day at approximately 3.30pm**



What a pleasure it is to welcome everyone back! After a decidedly chilly start to the summer term, Tring Park is heating up both figuratively and literally and the skies are as blue as in the photo above. The exam season has already started for some and runs all the way until 24<sup>th</sup> June. You can find all of our reminders for the exam season elsewhere in this letter. Exams are a normal part of every school but at Tring Park they take on a particularly special meaning as they are an opportunity to highlight the tremendous work undertaken by pupils and staff alike in the academic department. We are so proud of what they achieve in such a busy environment when they are also so focussed on their vocational studies.

That does not mean that the stage falls silent during this period however and Encore is preparing for their show next week before going up to London for their final performance at the Shaw. The Encore Show never disappoints so book your tickets now!

Please also note that we have a very short turnaround before the first exeat at the end of next week which, because of the May Bank Holiday, is three days long!

Access the parent portal [here](#)

# Tring Park

School for the Performing Arts

## Shows & Performances

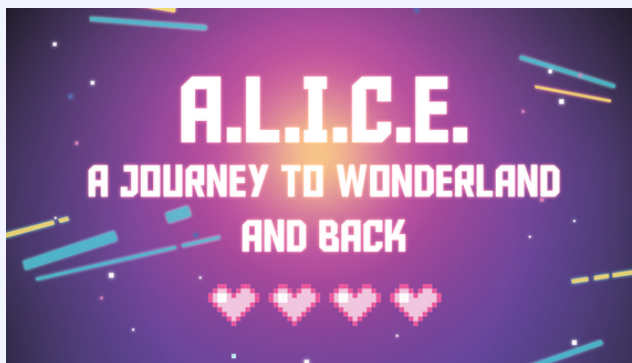
### **The Encore Show**

Markova Theatre, Tring: 28<sup>th</sup> April - 1<sup>st</sup> May  
The Shaw Theatre, London: 9<sup>th</sup> May

Join us for an unforgettable evening of dance celebrating the extraordinary artistry of our Year 14 performers in Encore Dance Company.

### **A.L.I.C.E. A Journey to Wonderland and Back**

21<sup>st</sup> and 22<sup>nd</sup> May



Our youngest pupils in the Prep Department perform a modern take on the traditional story

### **Coming up soon.....**

**PFC show** - 16<sup>th</sup> - 19<sup>th</sup> June

**YDS Show** - 29<sup>th</sup> June - 3<sup>rd</sup> July

[Click here for the box office](#)

## Holiday Courses

During the Easter Break we held our residential Dance and Musical Theatre Courses. We had 97 attendees who all had a fantastic week. Thank you to all of the staff and students who helped to make these courses so successful.

If you know someone who would like to experience life at Tring, our summer courses are now available to book online here <https://www.tringpark.com/holiday-courses/>

## UK Chemistry Olympiad



ROYAL SOCIETY  
OF CHEMISTRY



The UK Chemistry Olympiad is designed to challenge and inspire students, offering a unique opportunity to deepen their understanding of chemistry. Participants develop strong problem-solving skills, think more creatively and apply their knowledge to unfamiliar, real-world contexts. Last term, nine students from Years 12 and 13 studying AS and A-level Chemistry took part in the 2026 competition. We are delighted to celebrate their outstanding achievements: one Gold, four Silver and two Bronze awards. We are incredibly proud of their hard work and success!

# Tring Park

School for the Performing Arts

## Exam Season Reminders

School exams have already begun this week with our Year 10 internal exams and the Year 11 GCSE Art exams. Next week we have A-level Art and Photography exams and GCSE Language speaking exams. Following the exeat weekend the majority of public exams commence.

- **All exam timetables are on ISAMS** - please check them carefully.
- Morning exams start at 9am and afternoon exams start at 1.30pm.
- Students **MUST** arrive at least 15mins before these start times to their exam room.

### Preparation before the exam

- You must wear academic uniform to all exams
- Bring your equipment with you: black pens, pencil, ruler, eraser, compass, protractor, calculator (but remove the case) held in a clear pencil case.
- You may bring a clear water bottle, only water is allowed in exams.
- Do **NOT** bring in any unauthorised materials which include mobile phones, any other electronic devices, watches, correction fluid, eraser pens, bags, exercise books, notes, revision material or any food.
- Go to the toilet before you get to the exam space.



### When in the exam room

- You must be silent when entering the exam room.
- Do **NOT** write anything until you are told to by the invigilator.
- Listen carefully to the announcement at the start of each exam.
- Check your pockets for any unauthorised material and hand it in before the exam starts.



**Good Luck!**

*Results  
Days*

**AS and A level results**  
Thursday 13th August 2026

**GCSE results**  
Thursday 20th August 2026